

## Southern Mill Selects Berry Metal to Supply Chemical Energy Equipment for EAF Upper Shell.

Berry Metal Company (BMC) has announced that the company has been selected by a major steel producer in the south to supply chemical energy equipment for the company's upper EAF shell.

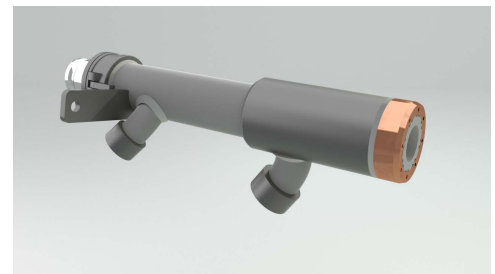
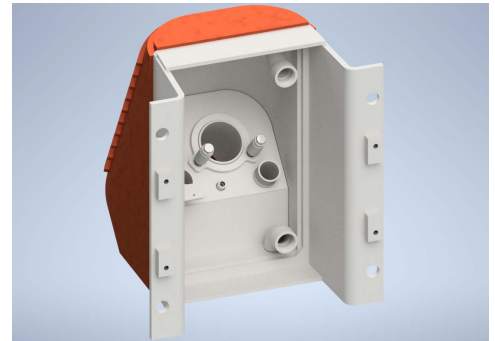
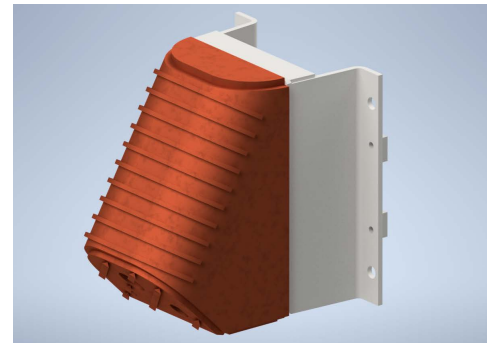
The scope of BMC equipment includes four Duraforge copper burner boxes and four new V-Max™ oxygen-gas burners with spares.

The new upper shell has four chemical energy positions with the ability to inject both carbon and lime in each location. The shell is expected to go into operation early in the second quarter of 2023.

Chemical Energy plays a key role in EAF steelmaking by increasing productivity and lowering operating costs. The Berry equipment will help:

- Increase chemical energy flexibility
- Reduce electrode consumption and gases
- Decrease kWh/ton
- Reduce burner plugging
- Reduce repair costs
- Increase refractory life

"We provide technology to improve efficiency, lower operating costs, and increase throughput," said George Boy, president and CEO of Berry Metal Company. "Our patented V-Max™ Burner Technology optimizes the oxygen and natural gas mix and increases bath penetration, improving chemical energy within the EAF."



Duraforge copper burner boxes and new V-Max™ oxygen-gas burners and spares